



SRK GRADING SYSTEM

World's 1<sup>st</sup> ISO Certified  
Diamond Grading System



srk.one

SRK GRADING SYSTEM (SGS)

Abbreviations and Expansions of 20 Grading Parameters

CARAT WEIGHT		
Size Ranges from 0.30 and Up		
CLARITY		
FL	FL	Flawless
IF	IF	Internally Flawless
VVS	VVS1	Very Very Slightly Included 1
	VVS2	Very Very Slightly Included 2
VS	VS1	Very Slightly Included 1
	VS2	Very Slightly Included 2
SI	SI1	Slightly Included 1
	SI2	Slightly Included 2
	SI3	Slightly Included 3
I	I1	Included 1
	I2	Included 2
	I3	Included 3
COLOR		
D, E, F		Colorless
G, H, I, J		Near Colorless
K, L, M		Faint
N to R		Very Light
S to Z		Light
FANCY COLOR		
Color		Yellow   Pink   Brown   Blue
Intensity		Faint   Light   Very Light
Overtone		Yellowish   Pinkish   Brownish
CUT		
EX		Excellent
VG		Very Good
G		Good
F		Fair
POLISH		
EX		Excellent
VG		Very Good
G		Good
F		Fair
SYMMETRY		
EX		Excellent
VG		Very Good
G		Good
F		Fair
FLUORESCENCE		
NON		None or No Fluorescence
FNT		Faint Fluorescence
MED		Medium Fluorescence
STG		Strong Fluorescence
VST		Very Strong Fluorescence

Fluorescence Color		
BLUE		Blue Fluorescence
YELLOW		Yellow Fluorescence
WHITE		White Fluorescence
ORANGE		Orange Fluorescence
BLUISH GREEN		Bluish Green Fluorescence
WHITE INCLUSION		
NONE	N	None or No White Inclusion
PIN POINT	PP1	Pin Point Minor Inclusion
	PP2	Pin Point Medium Inclusion
CRYSTAL	CRL1	Crystal Minor Inclusion
	CRL2	Crystal Medium Inclusion
SPREADED	SPR1	Spreaded Minor Inclusion
	SPR2	Spreaded Medium Inclusion
	SPR3	Spreaded Heavy Inclusion
FEATHER	FR1	Feather Minor Inclusion
	FR2	Feather Medium Inclusion
	FR3	Feather Heavy Inclusion
CLOUD	CLD1	Cloud Minor Inclusion
	CLD2	Cloud Medium Inclusion
	CLD3	Cloud Heavy Inclusion
SRK Specifies White Inclusion For 2 Sections		
(i) Table White Inclusion		
(ii) Side White Inclusion		
LUSTER LEVEL OF BRILLIANCE		
EX		Excellent Luster
VG		Very Good Luster
G		Good Luster
Milky		Grades
ML1		Slight Milky
ML2		Medium Milky
ML3		Heavy Milky
SHADES		
N		None or No Shade
BT		Brown Tinge
LB		Brown Shade
MT1		Light Mixed Tinge
MT2		Deep Mixed Tinge
GT		Green Tinge
PT		Pink Tinge
GRAINING		
N		None or no Graining
IG		Internal Graining
SG		Surface Graining
IG & SG		Internal & Surface Graining
HEART & ARROW		
EX		Excellent Heart & Arrow
VG		Very Good Heart & Arrow
G		Good Heart & Arrow

BLACK INCLUSION (NATTS)	
N	None or No Black Inclusion
B_PP	Pin Point Black Inclusion
B1	Minor Black Inclusion
B2	Medium Black Inclusion
SRK Specifies Black Inclusion For 2 Sections	
(i) Table Black Inclusion	
(ii) Side Black Inclusion	
SPOT INCLUSION	
N	None or No Spot Inclusion
PP	Pin Point
R1	Red Minor
G1	Green Minor
SRK Specifies Spot Inclusion For 2 Sections	
(i) Table Spot Inclusion	
(ii) Side Spot Inclusion	
OPEN INCLUSION	
N	None or No Open Inclusion
HL	Hair Line Open Inclusion
SM	Small Open Inclusion
MD	Medium Open Inclusion
HV	Heavy Open Inclusion
SRK Specifies Open Inclusion For 4 Sections	
(i) Table Open Inclusion	
(ii) Crown Open Inclusion	
(iii) Pavilion Open Inclusion	
(iv) Girdle Open Inclusion	
NATURAL	
N	None or No Natural
NT	Natural
INT	Indented Natural
NTINT	Natural & Indented Natural
EXTRA FACET	
N	None or No Extra Facet
SM	Small Extra Facet
MD	Medium Extra Facet
HV	Heavy Extra Facet
SRK Specifies Extra Facet For 3 Sections	
(i) Table Extra Facet	
(ii) Crown Extra Facet	
(iii) Pavilion Extra Facet	
ELIGIBLE GOODS	
FME	FOREVERMRK ELIGIBLE
CME	CANADAMARK ELIGIBLE
FPE	THE FOOTPRINTS ELIGIBLE



# SGS-THE PURE GRADING SYSTEM



## Carat

Ct	0.30	0.40	0.50	0.70	0.90	1.00	1.25	1.50	1.75	2.00	2.50	3.00	5.00	10.00
$\varnothing_{mm}$	4.5	4.8	5.2	5.8	6.3	6.5	6.9	7.4	7.8	8.2	8.8	9.4	10.95	13.90
h <sub>mm</sub>	2.7	3.0	3.1	3.5	3.8	3.9	4.3	4.5	4.7	4.9	5.3	5.6	6.80	8.60

## Clarity



IF/FL



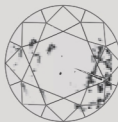
VVS 1/2



VS 1/ 2

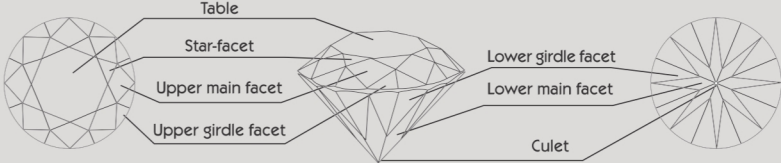
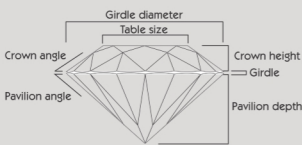


SI 1/ 2



I 1/ 2 / 3

## Cut



## Color



## Fluorescence



None

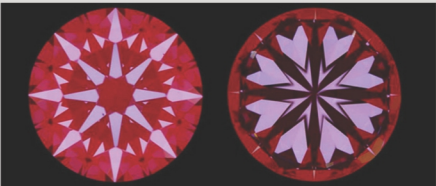
Faint

Medium

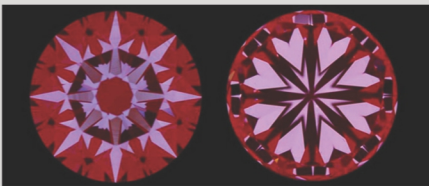
Strong

Very Strong

## H & A



EX - Excellent



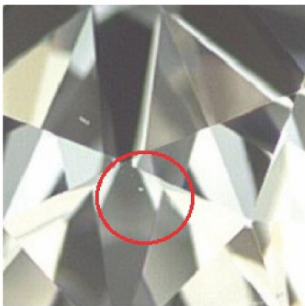
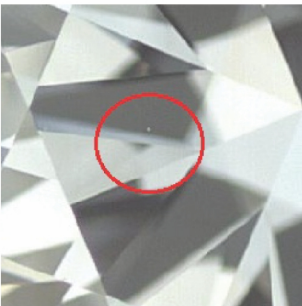
VG - Very Good



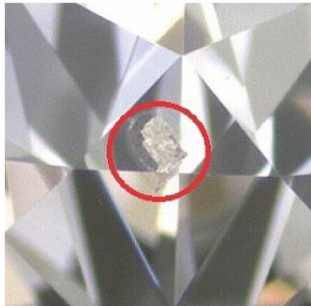
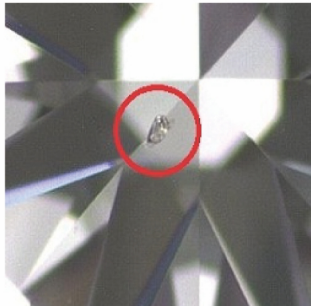
G - Good

# INCLUSION DETAILS

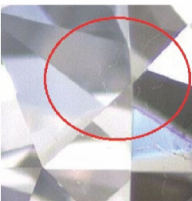
Pin Point



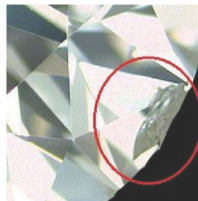
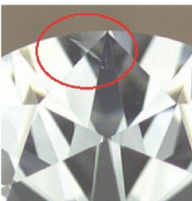
Crystal



Spreaded

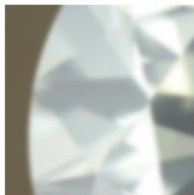
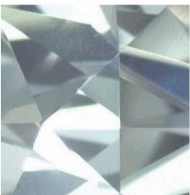


Feather

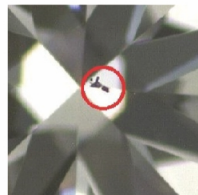
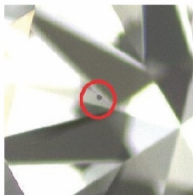
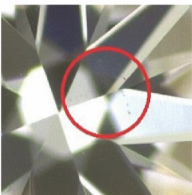


SPR2-Spreaded  
Medium

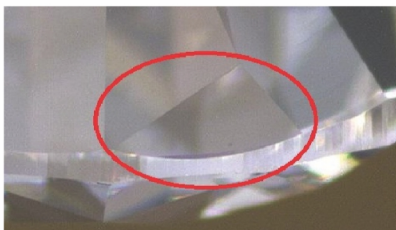
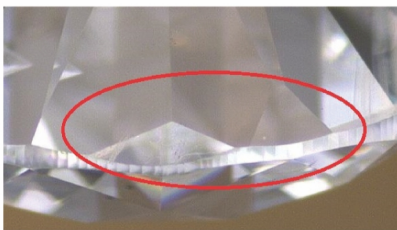
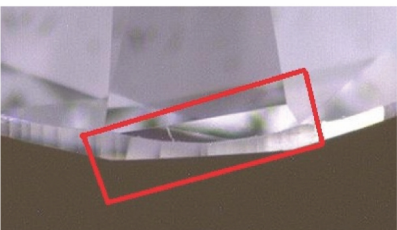
Cloud



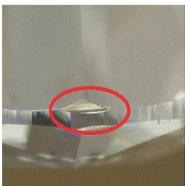
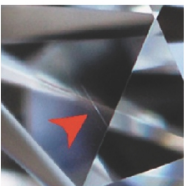
Black



Extra Facet



Open



\*The images shown here are for sample basis only which may vary in diamonds.



# SGS COMMENTS

---

EXCLUSIVE COLOR	If SGS Graded Color is "G" and Laboratory certifies it as "H", then SGS specifies "EXCLUSIVE COLOR" in the comment column.
UPGRADED COLOR	If SGS Graded Color is "H" and Laboratory certifies it as "G", then SGS specifies "UPGRADED COLOR" in the comment column.
EXCLUSIVE CLARITY	If SGS Graded Clarity is "VS2" and Laboratory certifies it as "SI1", then SGS specifies "EXCLUSIVE CLARITY" in the comment column.
UPGRADED CLARITY	If SGS Graded Clarity is "SI1" and Laboratory certifies it as "VS2", then SGS specifies "UPGRADED CLARITY" in the comment column.
EXCLUSIVE FLUORO	If SGS Graded Fluorescence is "FAINT" and Laboratory certifies it as "MEDIUM", then SGS specifies "EXCLUSIVE FLUORESCENCE" in the comment column.
UPGRADED FLUORO	If SGS Graded Fluorescence is "MEDIUM" and Laboratory certifies it as "FAINT", then SGS specifies "UPGRADED FLUORESCENCE" in the comment column.
EYE CLEAN	No Inclusions visible to the "Naked Eye" when viewed from the "Face Up" position in Daylight or Equivalent Spot Lighting from a relatively short distance of 6 - 10 Inches approximately. Normally with SI1 and lower clarity grade.
BROWN TINGE	SGS specifies "BROWN TINGE" in the comment, when it has comparatively Light Brown Shade of color. Normally with D, E & F Color. G color may or may not have Brown Tinge.
BROWN	SGS specifies "BROWN" in the comment, when it has comparatively Deep Brown Shade of color.
MIX TINGE 1	SGS specifies "Mix Tinge 1" in the comment, when it has comparatively Light Mixed Tinge of Yellow and Brown / Other colors.
MIX TINGE 2	SGS specifies "Mix Tinge 2" in the comment, when it has comparatively Deep Mixed Shade of Yellow and Brown / Other colors.
-- INSPECTION ADVISABLE (For Brown Shade)	According to SGS, diamond has LC shade, but it might be considered as Very Very Slight Brown Shade. SGS advises you to get it inspected personally or by your K.A.M at SRK before buying.
‡ INSPECTION ADVISABLE (For Mixed Shade)	According to SGS, it has LC shade, but it might be considered as Very Very Slight Mixed Shade of Yellow and Brown / Other colors. SGS advises you to get it inspected personally or by your K.A.M at SRK before buying.

\*Kindly feel free to mail us for any queries, SRK Team is here to help.





SRK EMPIRE



SRK HOUSE

## Shree Ramkrishna Exports Pvt. Ltd.

RO: CC-6055, Bharat Diamond Bourse, BKC, Bandra (E), Mumbai - 51, India. ☎ +91 22 4040 5555, [info@srk.me](mailto:info@srk.me)

"SRK Empire", 99, Vasta Devdi Road, Katargam, Surat - 4, India. ☎ +91 261 4040544, [surat@srk.me](mailto:surat@srk.me)

"SRK House", 112 Kasa Nagar road, Katargam, Surat -4, India. ☎ +91 261 715 0555, [surat@srk.me](mailto:surat@srk.me)



ISO 9001 | ISO 14001 | ISO 45001 | ISO 22000 | ISO 5001 | PAS 7000 | ISO 24016

© SIGHTHOLDER™ is a trademark used under licence from The De Beers Group of Companies | The ALROSA ALLIANCE is a logo used under licence by ALROSA | Forevermark is a part of The De Beers Group of Companies | Dominion Diamond Mines Trademark owned by Dominion Diamond Corporation

PURE LIGHT